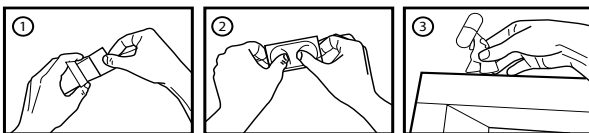


Omni directional radiation through aerial mode exclusively (direct contact not recommended).

Figurine efficiency is partly dependent upon proper knowledge of its' mode of action. Careful reading of the notice is thus recommended. If need be, do not hesitate to ask further detailed explanations from your retailer.

- After opening the box, attain inner emptiness (fig.1)
- Extract the figurine from the blister while taking a deep breath (fig.2)
- Display the figurine at the most appropriate location in the room (fig.3)



Please read the instruction sheet carefully before positioning this figurine and keep this notice for future reference. If you have further questions, if you are unclear about any of the information, consult your retailer or write to : info.zee@urfabulous.ch
This figurine has been purchased for personal but non-exclusive consumption. You may give or lend it to others without hesitation should they experience identical manifestations, as it would only

FIGURINE CHARACTERISTICS

Designation

25g Zee injected figurine

Compound quality

ATBC (Phthalates-free PVC), Art

Compound quantity

24.979g ATBC in solid form, .021g art in radiation form per figurine

Outer appearance

2.5" size in 12 color variants plus 3 special black, grey and glow-in-the-dark tints

Packaging

blister seal in blind box with notice

Developer

URFabulous – Boulevard Saint-Georges 21 – 1205 Geneva Switzerland

WHEN TO USE THIS FIGURINE

This figurine is an alpha-X mimetic compound. It operates as an immediate and lifelong energy enhancer by increasing emission and reception frequencies through radiation.

It is prescribed in cases of chronic or occasional energetic disorder and possible somatization.

Your retailer may recommend using it alone or in conjunction with the continued action of one or several additional figurines, according to your specific needs. It may also be indicated preventively against disorder and possible somatization due to any upcoming and anticipated events. In the event of an increase in energetic disorder or possible somatization following exposition to the figurine, do not renew direct exposure and contact your retailer. In case of uncertainty, please seek retailer or manufacturer advice.

WARNINGS

When not to use this figurine

In the absence of amelioration, consult your retailer immediately. Should the presence of a usually effective figurine prove unsatisfactory, if crises, energetic disorder or somatization become more frequent, there is a risk of a worsening condition. Promptly consult your retailer, who will re-evaluate his proposal.

DO NOT HESITATE TO SEEK RETAILER OR MANUFACTURER ADVICE IN CASE OF UNCERTAINTY.

Special warnings

In cases of chronic or occasional energetic disorder and possible somatization, expected improvements must be established directly following the exposition of and exposure to the figurine.

Precautions for use

This radioactive figurine must be allowed to act upon the entire energetic spectrum for which it is conceived. If the spectrum is cluttered (i.e. through excess noise or parasites) its' efficiency may be diminished. Consult your retailer without delay to obtain a more appropriate offer.

Possible interactions

To avoid possible and unwanted interactions between several designer toys, any and all other figurines in your custody must be mentioned without exception to your retailer or to the manufacturer. Studies have shown cumulative effects when several figurines are displayed in relation to each other, bringing about beneficial secondary effects depending upon figurine combination. Regular exposure to full moonlight may preserve and/or amplify figurine efficiency.

If the full series is displayed, favorable DNA alterations and readjustments may be induced over long-term use.

Pregnancy – breastfeeding

Under normal conditions of use, this figurine may be used throughout pregnancy. In case of pregnancy or breastfeeding, seek retailer advice.

HOW TO USE THIS FIGURINE

Dosage

- In case of energetic disorder or possible somatization: display the figurine upon experiencing manifestations and enter receptive mode. A favorable disposition is necessary for positive effects to occur. This procedure may be augmented if necessary by contemplating figurines for several minutes. If disorders do not recede rapidly, consult your retailer immediately.
- Preventing energetic disorder or possible somatization in the case of an upcoming event: look directly at the figurines for several minutes leading to the event's occurrence. The daily dose of radiation is unlimited but daily exposure may not usually exceed 24 hours (see warnings).

IN ANY CASE, STRICT COMPLIANCE WITH YOUR RETAILER'S OFFER IS MANDATORY. SHOULD DISORDERS PROVE PERSISTING, CONSULT YOUR RETAILER IMMEDIATELY.

Use of a figurine

The figurine must be displayed immediately following extraction from the blister and its' location may be switched at any time it is deemed necessary. Do not expose it to extreme temperatures.

Frequency and intervals of display and contemplation

In case of energetic disorder or possible somatization: the figurine must be displayed at the earliest manifestations and until their complete disappearance.

To prevent energetic disorder or possible somatization related to an upcoming event: contemplate the figurine several minutes before the event and, if possible, glance repeatedly towards it during the event itself for best results.

Duration of remedy

Follow your retailer's instructions and proposals. If an overdose is suspected, consult your retailer. As is the case with active compounds, these figurines may bring about a variety of more or less beneficial effects.

Cleaning

Figurines must be cleaned at least once a week to guarantee long-term efficiency.

How to clean your figurine?

- Place the figurine in an uncluttered zone free of impurities and dust. Use a dust removal antistatic cloth to gently wipe all of the figurine's surface.
- In case of more extensive dirtiness, use an all-purpose liquid detergent on dry cloth. Lightly moisten the cloth and gently scrub away the stains.
- Do not soak the figurine in water. Dry it carefully.
- Once these operations have been completed, put the figurine back in place.

PROPERTIES

Toxic Zee

The Toxic Zee probably represents a serious health hazard and may induce a wide variety of highly potent negative effects. It is likely to very rapidly provoke the following, among others: behavioral disturbances, nausea and vomiting, infertility, blindness and possibly death. Therefore, its' experimental use is subject to extreme caution and the URfabulous laboratories deny any responsibility should the Toxic Zee's blister packaging be opened. Designer: Nathalie Oswald

Eat Me Zee

The Eat Me Zee enhances social qualities within the user, by reinforcing humor traits and the sense of apropos. One should keep this figurine in habitually frequented public locations and attempt to be positioned as close as possible to it during the evening. Designer: Denis Hérisson

Femdom-Zeex Zee

The Femdom Zeex Zee figurine relieves daily frustrations by causing voluntary submission. Recommended to corporate executives, its' use on persons under 18 is subject to parental approval. Designer: Dr. Acid

Metamo Zee

The Metamo Zee yields an infinite number of possible metamorphoses in and of the user depending upon duration of exposition, activities in progress and state of mind expressed. Effects may be short-lived and instantaneous as well as slow and permanent. Undergoing entirely willful exposition to the Metamo Zee is recommended and under no circumstance should individuals be unknowingly exposed to its' influence. Designer: Nathalie Oswald

Reptile Zee

The Reptile Zee is a bioplastic figurine. It reinforces the mythical animals which inhabit the personal subconscious, allowing them to manifest themselves openly. Alterations of perception are commonplace during use of this figurine but they are generally ameliorations. Designer: Cruz

Graffiti Grenade Zee

The Graffiti Grenade Zee's surface is rugged from sustained explosions of joy and anger. Exposition to this figurine with detonating emotional properties must be handled with care. One may not subject to it either elderly or very young people. Designer : Flying Förtress

CharacterStation Zee

The CharacterStation Zee may provoke acute psychedelic crises. Given a favorable disposition, these manifestations cause relatively short-lived beneficial effects. However, alterations in visual perception may persist over time. Designer: Geoffrey Baumbach

Vingtneuf Degres Zee

The Vingtneuf Degres Zee is built out of creative stem cells. It may be used only under strict supervision from a creative professional. Non compliance with this express condition has led to hysterical episodes, which should be expected. Before any exposure, an equipment comprising at least a pen and paper must be procured. Designer: Sady

Fetish Zee

The Fetish Zee: appearances can be deceiving! Influences libido in rapid, repeated doses. Its use before legal majority isn't recommended. Patterns of addictive behaviors have been reported.

INTERACTIONS AND SIDE EFFECTS

When two or more figurines are in the presence of each other, their effects combine to generate new influences according to basic color wheel theory. For instance, a blue figurine together with a red figurine yields similar results to that of a single purple (or violet) figurine in addition to their respective effects. Resulting color mixes being quasi infinite, their effects may vary widely. In order to generate cumulative effects by interacting within a common field, figurines must be displayed so as to be facing each other.

SHOULD YOU NOTICE INTERACTIONS PROVOKING UNIQUE AND YET UNLISTED OR UNKNOWN INFLUENCES, PLEASE ADVISE YOUR RETAILER OR THE MANUFACTURER DIRECTLY.

ALL SIDE EFFECTS ARE PRESUMED TO BE BENEFICIAL.

STORAGE AND SAFEGUARDING

Radiating figurine : do not expose to excessive heat. Do not dismantle nor throw into a fire, even if broken.

INSTRUCTION SHEET REVISION DATE

September 2008



CharacterStation.com
CP 493 1211 Geneva 4 - CH
www.characterstation.com



vingtneuf degres
Villars-sur-Glâne – CH
www.29-degres.com



URFabulous

www.urfabulous.ch

Le laboratoire URfabulous participe au recyclage, à la collecte et à l'élimination des déchets de figurines. Il vous demande en conséquence de rapporter à votre pharmacien l'emballage de cette figurine, vide ou non.