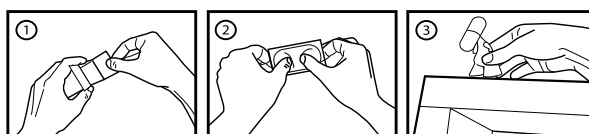


Omni directional radiation through aerial mode exclusively (direct contact not recommended).
Figure efficiency is partly dependent upon proper knowledge of its' mode of action. Careful reading of the notice is thus recommended. If need be, do not hesitate to ask further detailed explanations from your retailer.

- After opening the box, attain inner emptiness (fig.1)
- Extract the figure from the blister while taking a deep breath (fig.2)
- Display the figure at the most appropriate location in the room (fig.3)



Please read the instruction sheet carefully before positioning this figure and keep this notice for future reference. If you have further questions, if you are unclear about any of the information, consult your retailer or write to : info.zee@urfabulous.ch
This figure has been purchased for personal but non-exclusive consumption. You may give or lend it to others without hesitation should they experience identical manifestations, as it would only prove beneficial. The act of giving actually heightens the effect.

FIGURE CHARACTERISTICS

Designation

25g Zee injected figure

Compound quality

ATBC (Phthalates-free PVC), Art

Compound quantity

24.979g ATBC in solid form, .021g art in radiation form per figure

Outer appearance

2.5" size in 12 color variants plus 3 special black, grey and glow-in-the-dark tints

Packaging

blister seal in blind box with notice

Developer

URFabulous – Boulevard Saint-Georges 21 – 1205 Geneva Switzerland

WHEN TO USE THIS FIGURE

This figure is an alpha-X mimetic compound. It operates as an immediate and lifelong energy enhancer by increasing emission and reception frequencies through radiation.

It is prescribed in cases of chronic or occasional energetic disorder and possible somatization.

Your retailer may recommend using it alone or in conjunction with the continued action of one or several additional figures, according to your specific needs. It may also be indicated preventively against disorder and possible somatization due to any upcoming and anticipated events.

In the event of an increase in energetic disorder or possible somatization following exposition to the figure, do not renew direct exposure and contact your retailer. In case of uncertainty, please seek retailer or manufacturer advice.

WARNINGS

When not to use this figure

In the absence of amelioration, consult your retailer immediately. Should the presence of a usually effective figure prove unsatisfactory, if crises, energetic disorder or somatization become more frequent, there is a risk of a worsening condition. Promptly consult your retailer, who will re-evaluate his proposal.

DO NOT HESITATE TO SEEK RETAILER OR MANUFACTURER ADVICE IN CASE OF UNCERTAINTY.

Special warnings

In cases of chronic or occasional energetic disorder and possible somatization, expected improvements must be established directly following the exposition of and exposure to the figure.

Precautions for use

This radioactive figure must be allowed to act upon the entire energetic spectrum for which it is conceived. If the spectrum is cluttered (i.e. through excess noise or parasites) its' efficiency may be diminished. Consult your retailer without delay to obtain a more appropriate offer.

Possible interactions

To avoid possible and unwanted interactions between several designer toys, any and all other figures in your custody must be mentioned without exception to your retailer or to the manufacturer. Studies have shown cumulative effects when several figures are displayed in relation to each other, bringing about beneficial secondary effects depending upon figure combination. Regular exposure to full moonlight may preserve and/or amplify figure efficiency. If the full series is displayed, favorable DNA alterations and readjustments may be induced over long-term use.

Pregnancy – breastfeeding

Under normal conditions of use, this figure may be used throughout pregnancy. In case of pregnancy or breastfeeding, seek retailer advice.

HOW TO USE THIS FIGURE

Dosage

- **In case of energetic disorder or possible somatization:** display the figure upon experiencing manifestations and enter receptive mode. A favorable disposition is necessary for positive effects to occur. This procedure may be augmented if necessary by contemplating figures for several minutes. If disorders do not recede rapidly, consult your retailer immediately.
- **Preventing energetic disorder or possible somatization in the case of an upcoming event:** look directly at the figures for several minutes leading to the event's occurrence. The daily dose of radiation is unlimited but daily exposure may not usually exceed 24 hours (see warnings).

IN ANY CASE, STRICT COMPLIANCE WITH YOUR RETAILER'S OFFER IS MANDATORY. SHOULD DISORDERS PROVE PERSISTING, CONSULT YOUR RETAILER IMMEDIATELY.

Use of a figure

The figure must be displayed immediately following extraction from the blister and its' location may be switched at any time it is deemed necessary. Do not expose it to extreme temperatures.

Frequency and intervals of display and contemplation

In case of energetic disorder or possible somatization: the figure must be displayed at the earliest manifestations and until their complete disappearance.

To prevent energetic disorder or possible somatization related to an upcoming event: contemplate the figure several minutes before the event and, if possible, glance repeatedly towards it during the event itself for best results.

Duration of remedy

Follow your retailer's instructions and proposals. If an overdose is suspected, consult your retailer. As is the case with active compounds, these figures may bring about a variety of more or less beneficial effects.

Cleaning

Figures must be cleaned at least once a week to guarantee long-term efficiency.

How to clean your figure?

- Place the figure in an uncluttered zone free of impurities and dust. Use a dust removal antistatic cloth to gently wipe all of the figure's surface.
- In case of more extensive dirtiness, use an all-purpose liquid detergent on dry cloth. Lightly moisten the cloth and gently scrub away the stains.
- Do not soak the figure in water. Dry it carefully.
- Once these operations have been completed, put the figure back in place.

PROPERTIES

01_Yellow

Enhances self-confidence and aids in asserting oneself in the presence of coworkers and hierarchical superiors. Helps overcome shyness.

02_Light orange

Cleanses the aura and promotes awareness of one's place within society. Helps to acknowledge one's destiny. Amplifies talent and ambition.

03_Orange

Promotes a desire to organize social events and helps in keeping a festive mindset during gatherings organized by others. Appeases sadness and provides inner peace.

04_Dark orange

Helps remove guilt borne out of excessive material wealth. Protects from compulsive purchases and over-indebtedness.

05_Red

Awakens one's revolutionary character. Heightens the capacity to choose and promotes active engagement.

06_Pink / magenta

Heightens libido and breeds friendliness. Causes a need to offer presents and take care of others. Gives courage and promotes determination. Grants further vigor and dynamism.

07_Purple (violet)

Promotes successive opening of the various chakras and of the third eye (6th sense) of supra-sensory perception. Reinforces authority, power and respect for laws.

08_Dark blue

Pacifies sleep and protects from nightmares. Brings harmony to family entourage. Promotes all-round integration.

09_Blue

Soothes anxieties and dampens fears. Protects from personal data abuse and intrusion of privacy.

10_Light blue (cyan)

Markedly improves undulatory transmissions while diminishing electromog and the possible harmful effects of devices such as mobile phones and wi-fi modems. Helps to catch one's breath and regulates respiration.

11_Green

Promotes awareness of the importance of preserving the ecosystem and limiting pollution. Encourages a feeling of harmony with nature.

12_Light green

Repels discriminating tendencies. Generates tolerance and flexibility. Heightens curiosity.

S01_Black

In combination, alleviates the effect of any given figure displayed in the same room. Alone, emits a welcome signal to extra-terrestrial entities.

S02_50% grey

In combination, regulates the effect of any given figure displayed in the same room. Ineffective when displayed alone.

S03_White (glow-in-the-dark)

In combination, amplifies the effect of any given figure displayed in the same room. Alone, protects from ghosts and evil spirits.

INTERACTIONS AND SIDE EFFECTS

When two or more figures are in the presence of each other, their effects combine to generate new influences according to basic color wheel theory. For instance, a blue figure together with a red figure yields similar results to that of a single purple (or violet) figure in addition to their respective effects. Resulting color mixes being quasi infinite, their effects may vary widely. In order to generate cumulative effects by interacting within a common field, figures must be displayed so as to be facing each other.

SHOULD YOU NOTICE INTERACTIONS PROVOKING UNIQUE AND YET UNLISTED OR UNKNOWN INFLUENCES, PLEASE ADVISE YOUR RETAILER OR THE MANUFACTURER DIRECTLY.

ALL SIDE EFFECTS ARE PRESUMED TO BE BENEFICIAL.


STORAGE AND SAFEGUARDING

Radiating figure : do not expose to excessive heat. Do not dismantle nor throw into a fire, even if broken.

INSTRUCTION SHEET REVISION DATE

September 2007

Distribution:

 **CharacterStation.com**
CP 493 1211 Geneva 4 - CH
www.characterstation.com

 **URFabulous**
www.urfabulous.ch

The URFabulous Laboratory takes part in recycling, collecting and elimination of figure waste. You are thus required to return original figure packaging to your retailer, empty or otherwise.